

Dementia Care Pathway Guarantees



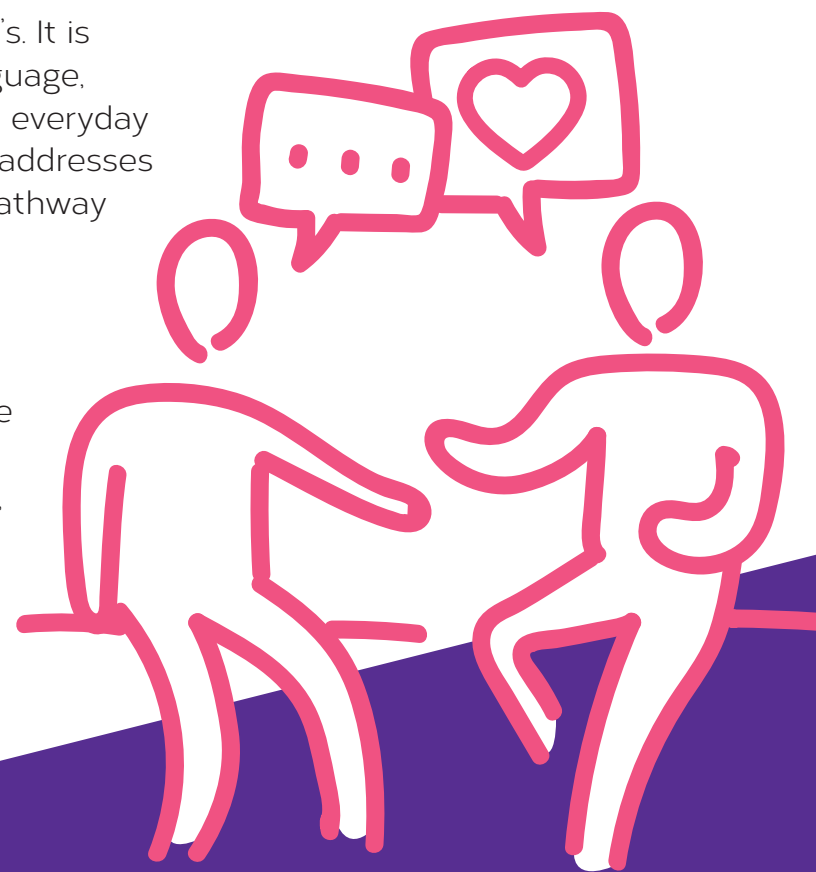
**Alzheimer
Scotland**
Action on Dementia

**Prevent.
Care.
Cure.**

Dementia is a progressive condition caused by diseases such as Alzheimer's. It is often characterised by changes in cognitive function such as memory, language, understanding, as well as changes in behaviour and the ability to carry out everyday tasks. It requires a comprehensive and coordinated approach to care that addresses the needs of individuals at different stages of the condition. These Care Pathway Guarantees outline the services and support that should be available for people with dementia and their carers, ensuring they receive well-timed, effective care throughout the progression of the condition.

At Alzheimer Scotland, we believe these Care Pathway Guarantees provide a structured approach to dementia care, making sure people receive the necessary support and services at each stage. By offering timely diagnosis, coordinated care, therapeutic services, and community resources, we aim to improve the quality of life for people with dementia and their carers.

The guarantees emphasise the importance of early intervention, ongoing support, and access to specialised care, ultimately fostering a consistent, compassionate and effective care environment for everyone, every time in Scotland.



Early stage

- ✓ **Referral and diagnosis**
Maximum of eight weeks to be seen from the point of referral.
- ✓ **Diagnostic tests**
Access to timely scans and all available diagnostic tests.
- ✓ **Post diagnostic support**
Maximum of one month to begin post diagnostic support.
- ✓ **Support duration**
Minimum of one year post diagnostic support for every person diagnosed.
- ✓ **Carer support**
Access to carers education academies and workshops to help carers and families understand dementia and learn effective support strategies.
- ✓ **Support groups**
Access to local support groups for people with dementia and their carers, providing a platform for sharing experiences and receiving emotional support.

Moderate stage

- ✓ **Care coordination**
A named specialist care coordinator and access to specialist community mental health teams.
- ✓ **Therapeutic services**
Access to specialist therapeutic day services and individual community support.
- ✓ **AHP teams**
Access to specialist Allied Health Professional (AHP) teams.
- ✓ **Respite support**
Carer access to flexible community and residential respite support.
- ✓ **Health checks**
Annual primary care health check.
- ✓ **Support budget**
Access to self-directed support budget.

Advanced stage

- ✓ **Ongoing care coordination**
Ongoing named specialist care coordinator and access to community mental health teams.
- ✓ **Home care services**
Access to specialist care at home services with named trained dementia-skilled staff.
- ✓ **Complex care services**
Access to specialist complex care day services.
- ✓ **Palliative care**
Access to palliative care and community geriatrician specialist.
- ✓ **In-patient facilities**
Access to specialist NHS continuing care in-patient facilities.
- ✓ **Respite facilities**
Access to community and residential respite facilities.
- ✓ **Residential and nursing care**
Access to local residential and nursing care facilities. With high quality skilled staff. Ongoing assessment to monitor changing needs and determine increased level of healthcare required in advanced and end of life stages.